

Clara's Garden Quilt

Designed by Lynne Goldsworthy of lilysquilts.blogspot.com
60" x 60" (1.5m x 1.5m)



Clara's Garden Quilt

Designed by Lynne Goldsworthy of lilysquilts.blogspot.com
60" x 60" (1.5m x 1.5m)

Fabric Requirements

SKU	Amount
2000/W02 (background)	1.75 m / 2 yds
2260 B and S 2261 B and Q 2262 Q and S 2263 Q 2264 S and Y 2265 B and G	50cm / ½ yard
2260S (backing)	3.5 m / 3 ¾ yds
2263S (binding)	50cm / ½ yard
Wadding 279 Cotton Mix 80-20 from http://www.vlieseline.com/en	1.7m sq / 68" sq
Thread: Aurifil 50wt for piecing and 40wt for quilting from http://www.aurifil.com	
Foundation paper piecing template paper Pattertrace foundation paper from https://www.pattertrace.com/	
Templates Thirty-six of the A template sheet and eighteen of the B template sheet	

Notes:

- Make sure to visit <http://www.makoweruk.com/projects/> to ensure you are working from the most up-to-date version of the pattern
- Read the pattern in full before starting
- Make sure to print the templates at "100%" or "no scaling" and double check the dimension guide line before starting
- ¼" seams are used throughout except where stated otherwise
- Press after each seam, pressing seams open or to one side as preferred
- WOF - width of fabric - a strip of fabric cut from selvedge to selvedge
- BKG – background
- The templates for this pattern are foundation paper pieced (FPP). If you are not familiar with foundation paper piecing, you can find a useful tutorial here <https://www.pattertrace.com/fpp/>

Cutting the fabrics

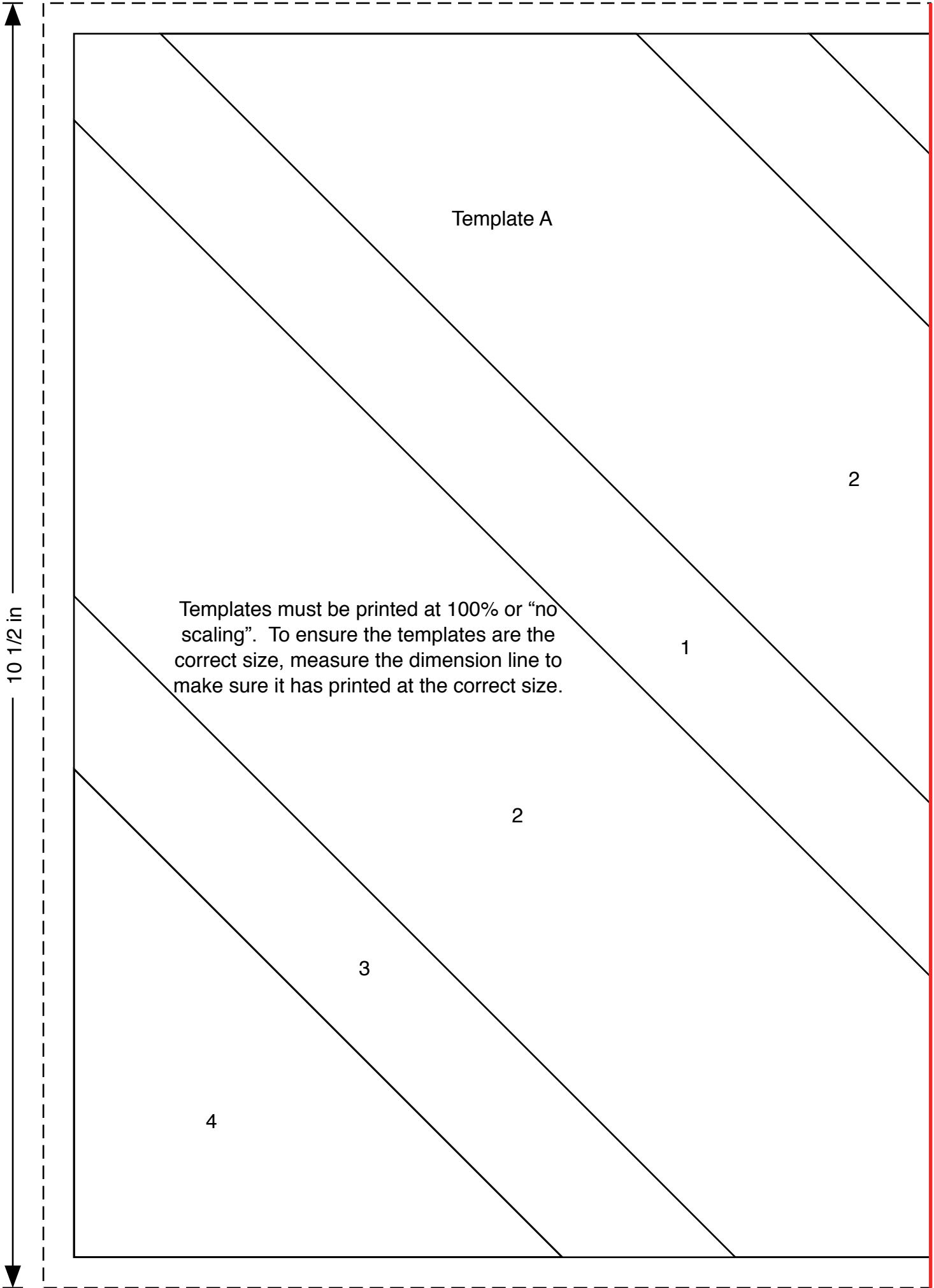
1. Cut each of the 50cm pieces of print fabric into four 3 ½" WOF strips. From those strips cut seventy-two 14 ½" and seventy-two 7" strips. These will be used to piece sections 2 and 4 on the templates.
NB: when you have cut two 14 ½" strips from one WOF, you can cut one 7" strip from the remainder.
2. Cut the BKG fabric into thirty-two 2" WOF strips and cut those into thirty-six 15" and seventy-two 9" lengths. **NB: when you have cut two 15" strips from one WOF, you can cut one 9" strip from the remainder.**
3. Cut the backing fabric into two equal lengths and the binding fabric into six 2 ½" WOF strips.

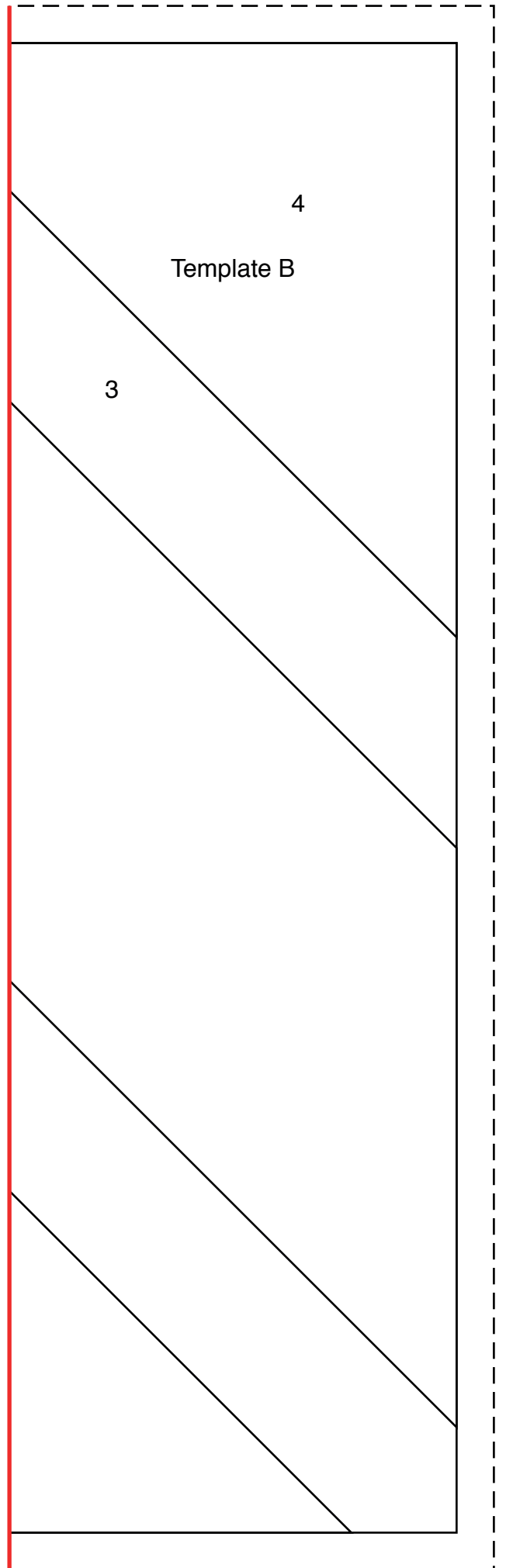
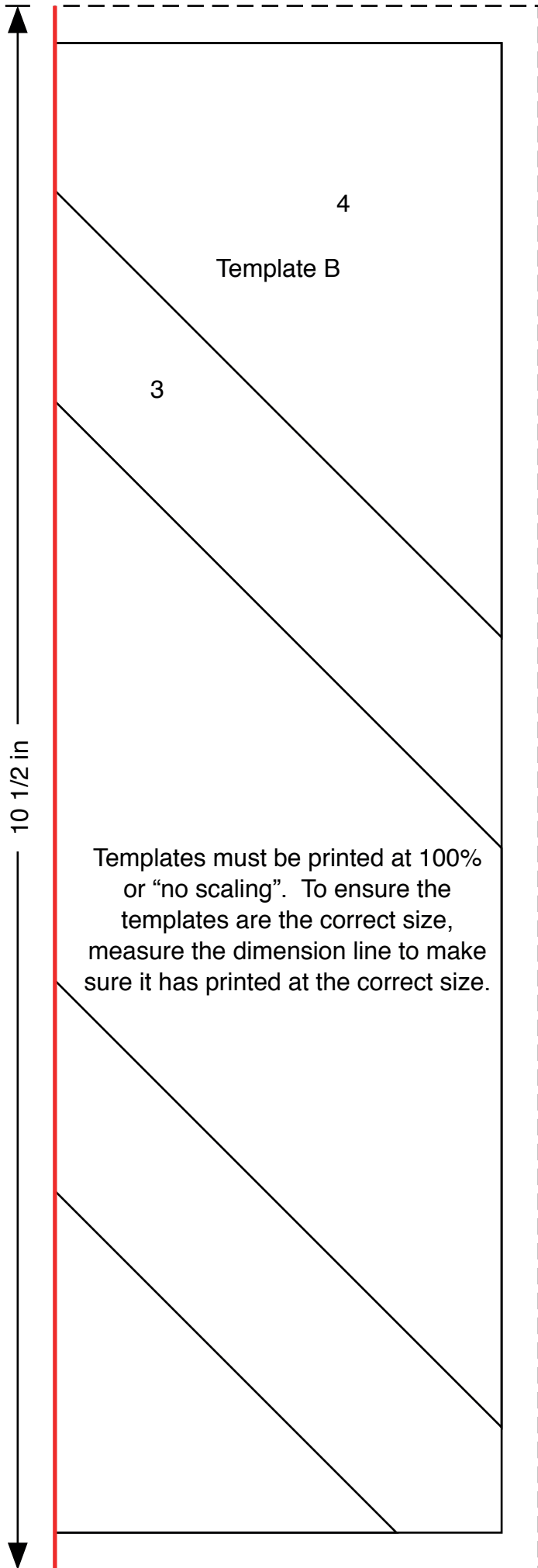
Making the quilt top

1. Tape together the two parts of each template at the red line to make thirty-six whole templates.
2. Foundation paper piece the templates using the BKG fabric for sections 1 and 3 and the print fabrics for sections 2 and 4. **NB: you may find it helpful to stitch baste the first BKG strip in place along section 1 to get each template started and prevent that strip from slipping out of place.**
3. You can either follow the layout in the main quilt image or choose your own layout for the placement of the fabrics in the blocks.
4. Once all the templates are pieced, trim away excess fabric and paper by cutting along the dashed lines then remove the paper from the back of each template, first folding and scoring along each line and then tearing away.
5. Sew the blocks into six rows of six then sew those six rows together to finish the quilt top.

Finishing the quilt

1. Sew the binding strips end to end using diagonal or straight seams as preferred and press wrong sides together along the length to make a double fold binding.
2. Sew the two pieces of backing fabric together. Make a quilt sandwich, basting together the back, the wadding and the top.
3. Quilt as desired then trim square, removing excess wadding and backing. We quilted a cross hatch of lines 2" apart using a cream 40wt Aurifil thread on the front and back.
4. Bind, taking care to mitre the corners.







2260/S Scene



2260/B Scene



2262/Q Chickens



2262/S Chickens



2263/Q Floral



2264/S Animals



2261/Q Plants



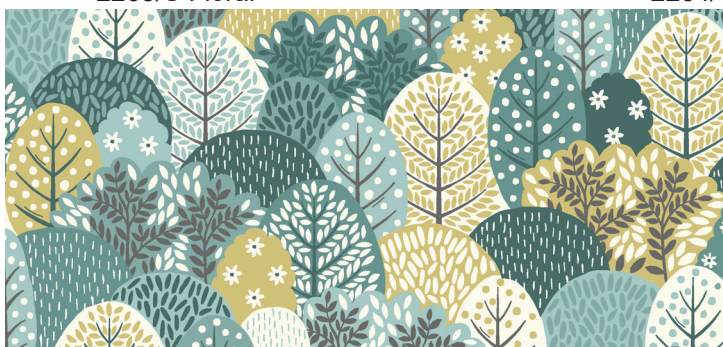
2263/S Floral



2264/Y Animals



2261/B Plants



2265/B Trees



2265/G Trees